

# R-F-M

## THE MIDLANDS MART

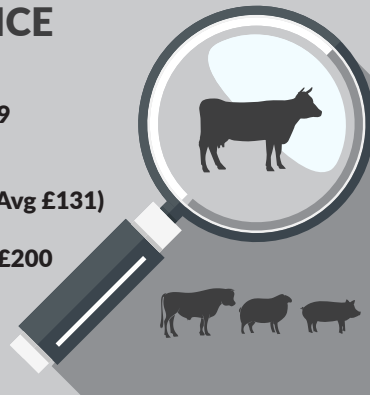
— RUGBYFARMERSMART.COM —

The Charolais Pavilion, Avenue M, Stoneleigh Park,  
Kenilworth, Warwickshire CV8 2RG  
02476 697731 | [www.rugbyfarmersmart.com](http://www.rugbyfarmersmart.com) | 43/139/8013  
Office hours: Monday to Friday - 9.00am - 5.00pm  
Opening Time: Gates open at 5.30am until further notice

## MARKET REPORTS FOR MONDAY 29TH NOVEMBER 2021

### MARKET AT A GLANCE

**Prime Steers to 334p/kg & £2218**  
**Prime Heifers to 580p/kg & £3619**  
**Prime Bulls to 226p/kg & £2007**  
**Cast Cows to 256p/kg & £2268**  
**Prime Lamb SQQ 292p/kg (2128 Avg £131)**  
**Show Lambs to 1352p/kg & £710**  
**Commercial Lambs to 426p/kg & £200**  
**Ewes to £330 (627 Avg £105)**  
**Store Lambs to £118 (344)**



### SATURDAY 4TH DECEMBER

### IN-LAMB EWE SALE 11AM WITH SMALLHOLDER SALE TO FOLLOW

Catalogues & Entry Forms available by post, email or on the website  
[www.rugbyfarmersmart.com](http://www.rugbyfarmersmart.com) | [admin@rugbyfarmersmart.com](mailto:admin@rugbyfarmersmart.com)

## CATTLE: 51 FORWARD



A wonderful section of Show cattle forwards and a ring of buyers with even the North calling via Tim's mobile. A full show report is available further within the Yellow Pages. Our thanks to Mr P Gentry, Wooley Brothers for his time Judging the cattle. He found a hard contested Champion in the form of Page Bros medium weight Heifer seeing 624kg sell to 580p/kg or £3620 to Leansale Ltd, Birmingham for distribution to a new high end Central London Steak House. Our Thanks to all Exhibitors and especially to Paul Gentry and the Leansale team.

### Steers;

Strength in weight the most noticeable aspect with breeding through and perhaps the only comment from buyers being the show cattle perhaps falling a little harder meated than in other years. Top of the shop this week 334p/kg for a medium weight from Page Bros, with lightweights to 323.5p/kg from P Jarrom and 321p/kg for Limousin from AA Fyfe & Son, Yelvertoft. In the gross a top of £2218 for Messrs Page with his best man Richard Ellis proving sometimes big is best selling heavy weights to £2053. First time cattle vendor D M Leedham selling Blues to £1978.

Commercial Cattle; Those not entered for showing topped at 255p/kg from F Hodgkin and topped the gross at £1807 for W R Keeves, Yardley Gobian with weighted Charolais.

### Heifers;

The Champion to a massive 580p/kg for Page Bros bought by Leansale Ltd but as soon as this beautiful specimen left the ring a handyweight heifer as good as any could wish to breed entered. The Reserve Champion again from Page Bros going on to sell to a massive 508p/kg to year in year out loyal supports Joseph Morris Butchers Ltd. Medium weights and YFC Champion Josh Geary took 382p/kg and box heifers from both Messrs Davies and Jarrom selling to 330p/kg and 332p/kg. In the lump a top gross of £3620 for the Champion!!! Reserve took £2581 and Josh Geary £2146. D Davies also breaking the £2000 barrier.

OUR THANKS FOR ALL THE BUYERS AT RINGSIDE. PLEASE SUPPORT THE WHOLESALERS IN RETURN THIS CHRISTMAS!!

### Bulls;

Heavy weights seeing 888kg from C H Evans, Wroxall return £2007.

### Cows;

All bases covered today topping with an E grade young Cow and Champion Cow from Page Bros selling to 256p/kg returning £2268. Young Cows from Jane Gilbert saw 232p/kg and Blues from Messrs Davies saw 221p/kg. R Graded cows with cover dealer on the week selling to 169p/kg for Messrs Tivey with over Fat Cows still over 130p/kg. Lean Cows easier to sell this week albeit feeding accounts beating Abbatoirs.

Auctioneer: Tom Wrench

# RFM

THE MIDLANDS MART

RUGBYFARMERSMART.COM



02476 697731

rugbyfarmersmart.com



## SATURDAY 4TH DECEMBER

ENTIRE DISPERSAL OF THE "MARLENE FLOCK" OF 180  
IN-LAMB FLOCK AGE EWES

ON BEHALF OF D & E MITCHELL, NUNEATON  
WHOM ARE RETIRING

PEDIGREE, PURE & 3/4 TEXEL, DUTCH TEXEL & BELTEX  
FEBRUARY LAMBERS

EWES TO BE SCANNED IN THE MARKET

ALSO THIS DAY SMALLHOLDER SALE & COMPLIMENTARY HOGG ROAST

## STEERS & BULLS

Top prices per Head				FA
Limousin x	664kg	£2218	Page Bros	Y
Limousin x	708kg	£2053	R Ellis & Son	Y
British Blue	622kg	£1978	D M Leedham	Y
Limousin x	614kg	£1940	P M Jarrom	Y
Simmental (bull)	888kg	£1918	C H Evans & Son	Y

Top prices per Kilo				
Limousin x	664kg	334ppk	Page Bros	Y
Limousin x	584kg	323.5ppk	P M Jarrom	Y
Limousin x	564kg	321ppk	A A Fyfe & Sons	Y
British Blue	622kg	318ppk	D M Leedham	Y
Limousin x	614kg	316ppk	P M Jarrom	Y

## HEIFERS

Top prices per head				FA
Limousin x	624kg	£3619	Page Bros	Y
Limousin x	508kg	£2581	Page Bros	Y
Limousin x	562kg	£2147	J Geary	Y
Limousin x	674kg	£2002	D A Davies	Y
Limousin	636kg	£1946	G R Fountaine & Son	Y
Top prices per kilo				
Limousin x	624kg	580ppk	Page Bros	Y
Parthenaise	508kg	508ppk	Page Bros	Y
Blonde	562kg	382ppk	J Geary	Y
Limousin	484kg	332ppk	P M Jarrom	Y
Limousin x	586kg	330ppk	D A Davies	Y

**NEXT CALF SALE**  
**MONDAY 6TH DECEMBER 11AM**

## COWS

Top prices per head OTM				FA
Limousin x	886kg	£2268	Page Bros	Y
British Blue	792kg	£1750	DA Davies	Y
British Blue	592kg	£1373	JB HM & J Gilbert	Y
Limousin	720kg	£1368	P M Jarrom	Y
Top prices per kilo				
Limousin x	886kg	256ppk	Page Bros	Y
British Blue	592kg	232ppk	JB HM & J Gilbert	Y
British Blue	792kg	221ppk	DA Davies	Y
Limousin	720Kg	190ppk	P M Jarrom	Y



## SHEEP: 3099 FORWARD

### PRIME LAMBS:2128

### FORWARD SQQ 281P/KG AVG £124

A Bumper show day with quality on show from many dedicated show teams. Our thanks to P Parkin, Howden, Yorkshire for his time and expertise Judging the show. Mr Parkin finding his Champions from the heavy weight un-trimmed class exhibited by a good old Rugby man himself Pete Batchelor. These superb Beltex scaled at 52.5kg showing loin, giget and most importantly finish throughout. A new Show record set for these amazing lambs when selling to a huge £13.52p/kg or £710 to Akram for direct shipment to a top end Butcher in Brussels. Reserves were found again from Pete Batchelor weighing 50kg at 600p/kg and £300. YFC Champion and first time vendor Florence Claridge saw her superb Texels at 54kg make a massive 667p/kg and return £360 again selling to Akram but this time destined for the German Markets. Show lambs on the whole a real trade and most trading over 320p/kg with Edmund Ringer 43kg to 426p/kg and £200 with M & C Morris selling super Ewe lambs at 423p/kg and £182.

#### Commercial Lambs;

Over 2100 lambs today with an all in avg of £131. Have we ever had it so good. An Sqq of 292p/kg with all lambs in but an Sqq that with the Show removed still tallies over 290p/kg with the majority of this years show being heavyweights. Export lambs topped at 423p/kg for M & C Morris at 43kg with G R Fountaine & Son taking 38kg to 370p/kg and 36kg from M J Woodward 361p/kg. Heavies trading at extreme weights if finished to see a top of 426p/kg for Leam Farming at 47kg and 337p/kg at 49kg from Messrs Claridge, Buckingham with 46.5kg from D W Gurney & Son 323p/kg. In the lump Export weights totting up to see £182 for 43kg from M & C Morris with B C Burton 45kg to £150 and M & C Morris then taking 44.5kg to £142. Overall the obvious £710 Champions!!! But other than those mentioned a top of £200 for Edmund Ringer. Commercial in big pens saw £169.50 at 63kg from D Dashwood with 52kg at £166 for M & C Morris with 60kg and 75kg from R & B Smith. Trade very special and not really uplifted by the show just the quality. Nice to see new and old faces throughout.

*Auctioneer: Tom Wrench*

## SPRING LAMBS : UNDER 45.5kg SQQ 281p/kg

Per Kilo

Beltex	43.00kg	423ppk	M & C Morris
Beltex	38.00kg	370ppk	GR Fountaine & Son
Beltex x	36.00kg	361ppk	M J Woodward
Beltex x	36.00kg	357ppk	D W Gurney & Son
Beltex x	39.00kg	350ppk	J Geary

Per HEAD

Beltex	43.00kg	£182.00	M & C Morris
Texel	45.00kg	£150.00	B C Burton
Texel x	44.50kg	£142.00	M & C Morris
Texel x	38.00kg	£140.50	GR Fountaine & Son
Texel x	41.50kg	£140.00	GR Fountaine & Son

## SPRING LAMBS : OVER 45.5 kg

Per Kilo

Beltex x	52.50kg	1352ppk	P Batchelor
Texel x	54.00kg	667ppk	AEJ & FJ Claridge
Beltex x	50.00kg	600ppk	P Batchelor
Texel x	47.00kg	426ppk	Leam Farm Partnership
Texel x	49.00kg	337ppk	AEJ & FJ Claridge

Per HEAD

Beltex x	52.50kg	£710.00	P Batchelor
Texel x	54.00kg	£360.00	AEJ & FJ Claridge
Beltex x	50.00kg	£300.00	P Batchelor
Texel x	47.00kg	£200.00	Leam Farm Partnership
Charollais x	63.50kg	£169.50	D Dashwood

**PLEASE COULD ALL VENDORS BOOK IN STOCK,  
EITHER BY A QUICK CALL, TEXT OR EMAIL THANK YOU!**

Office: 02476697731 | Email: [admin@rugbyfarmersmart.com](mailto:admin@rugbyfarmersmart.com) | Tom: 07774723758

## CULL EWES: 627 FORWARD



Numbers always less on show day but still well over 600.

Champion Ewes today £330 for Texels from D W Gurney & Son, Buckingham for a trio with Commercial Texels to £280 from Messrs Leadbeater for another trio with James Gurney Charollais to £230 and Messrs Leadbeater £172. Humphrey Livestock saw £166 for Charollais and Poulson & Co £160.50. All weighted shape over £150. Suffolks to £140 for Jenny Gibbs for a trio others £133 for Leam Farming with Alwyn Williams £132.50. Suffolks almost all over £125 if meated. Mules on fire topping at £135 for Welsh Mules from A Pittom and NCM to £130 from J D Weaver and £129 for J Barber with C W Glover £121. Mules generally trading over £100 and Ewes simply on fire.

*Auctioneer: Tom Wrench*

### EWES

Texel x	£330	D W Gurney & Son	Charollais x	£160.50	Poulson & Co
Texel x	£280	DJ & BJ Leadbeater	Texel x	£159	Leam Farm Partnership
Charollais x	£230	D W Gurney & Son	Charollais x	£157	Poulson & Co
Texel x	£172	DJ & BJ Leadbeater	Texel x	£156	Leam Farm Partnership
Charollais x	£166	Humphrey Livestock	Texel x	£151	J Dronfield



## STORE LAMBS: 344 FORWARD

A good show of lambs on this Christmas Fatstock day.

A few meaty Lambs about achieving £118 for Pear Tree Partnership for Charollais lambs and Clarke Farming Partnership top with Suffolk lambs at £109.

A full ring of buyers again insuring prices averaging well over £90.

*Auctioneer: Tim Webster*

## Chairman's Report

The 48th Rugby Primestock Christmas Show & Sale was a return to our full show schedule. The regular vendors of the market turned out in force with 30 cattle and 70 sheep entries. In addition we had entries for Christmas Cake, Pork Pies, Sausages and Mince Pies.

Thank you to the Rugby Farmers Mart Board and Management Team for allowing the Christmas Show & Sale to take place. The weather did hamper our timings and we thank everyone for their patience as we tried as best to the advertised times.

The show set off with the Sheep Judging and we thank Mr Philp Parkin of Parkins Family Butchers for travelling from East Yorkshire to undertake the task of judging the lambs and ewes. A super show of sheep across the board from regular market sheep vendors. Mr Parkin's Champion and Reserve Champion came from show regular Pete Batchelor, Young Farmers Champion Florence Claridge and the native ewes going to Jenny Gibbs of P & L A Gibbs, with the Gurney Family winners of the Continental Cull Ewe Section.

The Cattle Section was ably judged by Mr Paul Gentry who needs no introduction. Mr Gentry's Champion and Reserve Champion were shown by Frank Page of Page Bros, his Young Farmers was Josh Geary.

Our produce section returned and we thank our judges Bob Smart of Agrovista for judging the Farm Produce, John Taylor of Taylors Family Butchers for judging the Pork Pies & Sausages. Barbara Collett judged the Christmas Cake and Cindy Simpson the Mince Pies.

Our Winners were A D Ringrose Butchers of Broughton Astley for their Pork Pie and Sausages, Glynis for the Mince Pies and Emma Greig for the Christmas Cake. Andy Mitchell won the overall points in the produce section. Thanks goes to all those that entered.

Also thanks to The Bell at Winslow & C Humphries of Essex /Farm shop name for sending pies to auction for Charity. Mrs Stevens cake also made a return selling for £180 to Steve Eales.

Thank you to all our sponsors and all of the staff of the market and volunteers that contributed to the running of the day. Without them we would not be able to carry out the show. If you want to get involved with the show please join us at our AGM in January - date and time to be advertised.

Finally, thank you to all that purchased produce or a raffle ticket to help raise funds for the chosen charity Blood Cancer UK, a final total of the sums raised will be announced soon.

Emma Greig

## Prize Winners - Sheep

<b>Class</b>	<b>Exhibitor &amp; PEN</b>
<b>Champion Euro Sired Lambs (Classes 14, 15 &amp; 16 also 17 &amp; 18 were applicable)</b>	<b>P Batchelor</b> 1st Class 15 Bel/Texel Sire Heavyweight Pen 44a - 52.5kg 1352ppk PAK MECCA sold for charity.
	Pen 44a - 52.5kg 762ppk PAK MECCA
<b>Champion Native Sired Lambs (classes 19 &amp; 20 also 17 &amp; 18 if applicable)</b>	<b>MJ Woodward</b> 1st Class 20 Native Sire Heavyweight Pen 63 - 46.5kg 303ppk PAK MECCA
<b>Champion Cull Ewe (classes 24 &amp; 25)</b>	<b>DW Gurney &amp; Son</b> 1st Class 24 Cull Ewes - Continental Pen 83 - 330pph PAK MECCA
<b>Champion Suffolk Sired Pen of Lambs (All Classes)</b>	<b>MJ Woodward</b> 1st Class 20 Native Sire Heavyweight Pen 63 - 46.5kg 303ppk PAK MECCA
<b>YFC Champion (class 21)</b>	<b>Florence Claridge</b> 1st Class Pen 66 - 54kg 667ppk PAK MECCA, Birmingham
<b>Supreme Champion</b>	<b>P Batchelor</b> 1st Class 15 Bel/Texel Sire Heavyweight Pen 44a - 52.5kg 1352ppk PAK MECCA sold for charity.
	Pen 44a - 52.5kg 762ppk PAK MECCA
<b>Reserve Supreme Champion</b>	<b>P Batchelor</b> 1st Class 18 Trimmed Heavyweight Pen 57 - 50kg 600ppk PAK MECCA



## Prize Winners - Cattle

<b>Class</b>	<b>Exhibitor &amp; Lot</b>
<b>Heaviest Steer</b> Sponsored By A & B Tarry-Smith	<b>R ELLIS &amp; SON</b> LOT 24 708KG - 290ppk - Robert Pearson Wholesale Butchers, Bradford
<b>Home, Bred, Fed and Halter led</b> Sponsored by Page Bros	<b>F Page</b> Lot 6 1st Class 2 Medium weight steer 664kg - 334ppk- Pearsons
<b>Opposite Sex to Champion</b> Sponsored by Lower Quinton Garage	F Page Lot 6 1st Class 2 Medium weight Heifer 664kg - 334ppk - Pearsons
<b>Reserve Supreme Champion</b> Sponsored by Mid England Agriculture Ltd	<b>F Page</b> Lot 13 1st Class 4 Light weight Heifer 508kg - 508ppk - Morris Butchers, Kilworth
<b>Purchaser of Supreme Champion</b> Sponsored by Wright Hassall	<b>Leansale Ltd, Birmingham</b>
<b>Supreme Champion</b> Sponsored by Manor Farm Feeds	<b>F Page</b> Lot 14 1st Class Medium weight Heifer 624kg - 580ppk - Leansale Ltd
<b>Points Trophy</b>	<b>F Page, Elkington</b>
<b>YFC Points Trophy</b>	<b>J Geary, Hanslope</b>

## THURSDAY 25TH - STORE CATTLE



A few less cattle about but prices no way compromised with prices very fast and as good as ever

John Peebles sold May 2020 Limousin Steers £1190-£1400.

Messrs JW&BE&PW Semple sold this Spring Limousins £920-£1060, very good sorts.

Also good to see Messrs RS Beaty here with a rook of quality Simmentals 19/20 mo Steers £1135-£1390 and Heifers £1200-£1275 all keenly contested over.

Ted Taylor had a good day selling 20mo Charolais Steers and Heifers £1200-£1230

A few British Blue Steers and Heifers entered from Mark Jackson and Kirsty Badger selling £1005-£1100.

A few Traditional Breeds on offer Messrs P Honour & Son selling British Shorthorn £700-£880, also Messrs RJ & P Milner and Messrs TR & PD Baker selling South Devon's £890-£1120.

A few Angus cattle sold today from MA Squire £870-£1020.

Entries now being taken for the next sale 16th December

*Auctioneer: Tom Wrench*

## STORE LAMBS THURSDAY 25TH: 478 FORWARD



Another Thursday sale with a good attendance of buyers and good lots of quality sheep in the main.

Texel Lambs from PT Harris & Son and Will Allan both topped the day at 110.50.

Our very own Jenny Gibbs had the best native prices at £99 for her Suffolk lambs.

The average again over £90

*Auctioneer: Tim Webster*

# RFM

THE MIDLANDS MART

RUGBYFARMERSMART.COM



02476 697731

[rugbyfarmersmart.com](http://rugbyfarmersmart.com)

## SATURDAY 4TH DECEMBER

ENTIRE DISPERSAL OF THE "MARLENE FLOCK" OF 180  
IN-LAMB FLOCK AGE EWES

ON BEHALF OF D & E MITCHELL, NUNEATON  
WHOM ARE RETIRING

PEDIGREE, PURE & 3/4 TEXEL, DUTCH TEXEL & BELTEX  
FEBRUARY LAMBERS

EWES TO BE SCANNED IN THE MARKET

ALSO THIS DAY SMALLHOLDER SALE & COMPLIMENTARY HOGG ROAST

## HARRIS & CLARKE

CHARTERED ACCOUNTANTS

*...Specialising In Agriculture...*

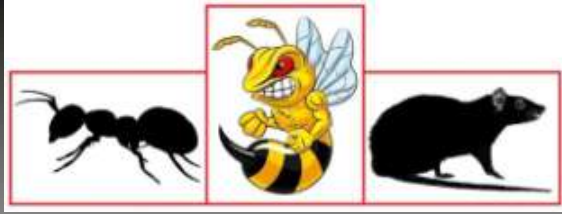
Our team of staff has many years of  
experience in dealing with the accountancy  
and taxation affairs of farmers, landowners  
and agricultural contractors

For further information or a free no  
obligation meeting please contact

**John Harris**

7 Billing Road, Northampton, NN1 5AN  
Telephone 01604 622274  
[www.harrisandclarke.co.uk](http://www.harrisandclarke.co.uk)





# RDB Pest Control

Reliable | Trustworthy | Fast | Effective  
Competitive Prices

**Ryan Brunt**

**07922 091 459**

**[www.rdbpestcontrol.co.uk](http://www.rdbpestcontrol.co.uk)**

## **Why You Should Choose Us**

- ✓ Cater for Red Tractor and Farm Assurance Schemes
- ✓ Wide ranging experience on Farms with existing agricultural customers
- ✓ Member of Warwickshire Young Farmers
- ✓ Fully qualified - Level 2 RSPH in Pest Control
- ✓ Trustworthy and security vetted
- ✓ Prompt, reliable fast response

## **A selection of sites where I have experience:**

Police Sites • Local Airport • Farms • Warehouses • Offices  
• Industrial Estates • Food Premises • Private Houses  
Country Estates • Building Sites • Local Councils • Schools •  
Day Nurseries • Care Homes



## AUTO GATES LTD

Bridge Farm, Holt Lane, Ashby Magna, LE17 5NJ

Trevor 07498993897/01455 202791

Email: [tjautogate@gmail.com](mailto:tjautogate@gmail.com)

Fitted to new or existing gates, wood or steel automated.

Sliding, swinging or cantilever.

## Farm insurance, the way it should be

We're a family-run business and pride ourselves on forging long term relationships with our farming and agricultural clients. Covering the Midlands, South West and South East, we deliver an extensive range of farm, agri business and equine policies tailored to you.

[www.county-insurance.co.uk/farms](http://www.county-insurance.co.uk/farms)

Farm & Equine **01865 844985**

General **01865 842084**

 Follow us [@County\\_Farm](https://twitter.com/County_Farm)



# WE COVER SMALL FARMS, LARGE FARMS AND EVERYTHING IN BETWEEN



From sheep farmers to arable farmers.  
Flower growers to poultry farmers.

NFU Mutual is proud to insure over 75% of UK farms with our Farm Select insurance. But we want more farms to benefit from great cover and local service. NFU Mutual has introduced Farm Essentials insurance - designed to meet the needs of smaller farms.

As your local agency, we are close by and can provide expert advice and hands-on support when you need it.

Call **Coventry Office** on **02476 444519**

NFU Mutual, 6 Eastwood Business Village,  
Harry Weston Road, Binley Business Park,  
Coventry, CV3 2UB



**NFU Mutual**  
FARM INSURANCE



## BORDER COLLIE PUPS FOR SALE

Border Collie Pups for sale  
Both parents working & registered  
Micro-chipped, wormed and had first vaccination.

Call Graeme 07891677468 (T378)

## BORDER COLLIE PUPS FOR SALE

2 Male rough coated pups born  
26/8/21, microchipped, ISDS  
Registered  
By Kevin Evans Spot out of a bitch by  
Derwen Doug very well bred, sensibly  
priced.

South Northants Call 07709306038  
(K181)

### FINISHING CATTLE? GROWING CATTLE? FEEDING SHEEP?

**BERRYSTOCK  
FEEDS**



Do you want **HIGH PERFORMANCE, COST EFFECTIVE, FULLY ASSURED and COMPLETE FEEDS?** Then contact **BERRYSTOCK FEEDS:**

Tel: 01788 890320 E-Mail: [john@berryfieldsfarm.co.uk](mailto:john@berryfieldsfarm.co.uk) Web: [www.berrystockfeeds.co.uk](http://www.berrystockfeeds.co.uk)  
BERRYFIELDS FARM, DAVENTRY, NN11 8NP

## T.A.R HIRE

- **FOR HIRE:**
- **10 & 14 TON REAR MUCK SPREADERS**
- **12 TON TRAILERS WITH SILAGE SIDES**
- **ROAD SWEEPER**
- **FLAT TRAILERS**
- **GRASS TOPPERS**
- **CONTRACT MUCK SPREADING SERVICES**



**CONTACT:**

**DAVENTRY (ROB) - 07801791212**

**HINCKLEY (ALAN) - 07802951179**

# RFM

**THE MIDLANDS MART**

—RUGBYFARMERSMART.COM—

## **FORTHCOMING SALES**

**Thursday 16th December**

**Store Cattle Sale  
Plus Morning Sale of Store Lambs**

**Vendors who are wishing to sell stock  
please feel free to contact:**

Tom Wrench - 07774 723758

Gareth Doyle- 07902 330623

Tim Webster- 07437 101163

who will gladly make

**A FREE ON FARM VISIT & VALUATION**



**Follow us on social media:**

Facebook & Twitter - @RFMMidlandsMart

Instagram - rugbyfarmersmartltd